

« SÉMINAIRE NATIONAL IMAGERIE OPTIQUE *IN VIVO* »

17 & 18 SEPTEMBRE 2015 – AVIESAN (PARIS)

APPEL À MANIFESTATION D'INTÉRÊT
OFFRE DE SERVICES

medicen | innovation
PARIS REGION for
health

FLi
France Life Imaging

Unité de modèles précliniques et imagerie
Abdessalem, REKIKI
BIOASTER



MAIRIE DE PARIS

île de France

Essonne
LE DÉPARTEMENT

seine saint denis
LE DÉPARTEMENT

VAL de
MARNE
Conseil général

val
d'oise
le département

AGENCE NATIONALE DE LA RECHERCHE
ANR

bpi france

l'Europe
engage
en France

LES PÔLES DE
COMPÉTITIVITÉ
MOTEURS DE CROISSANCE ET D'EMPLOI



*UNITÉ DE MODÈLES PRÉCLINIQUES
ET IMAGERIE*

SÉMINAIRE NATIONAL IMAGERIE OPTIQUE *IN VIVO*
Abdessalem REKIKI

▶ 1. PRÉSENTATION DU PRESTATAIRE



DESIGN AND STATISTICAL ANALYSIS OF EXPERIMENTS

- Animal model development and experimental design (including surgical methods)
- Antimicrobial activity (MIC, PK, DL, ED)
- Statistical processing of small animal number
- Mouse models to study microbiota and microbiota-host interactions (Immuno-histology)

MOLECULAR IMAGING

- Bacterial transformation
- Bioluminescence & Fluorescence
- Monitoring of infection and treatment using whole animal live multimodal imaging
- Biodistribution

3D IMAGING & BIODISTRIBUTION

- Fluorescence molecular tomographic localization
- Biodistribution of labelled pathogen, nanoparticles, drugs or probe

1. BIOASTER technology, units cross interactions

The **Preclinical Models & Imaging Unit** is integrated within **Bioaster Technology Cluster** to deliver **research projects** of increasing interest to **public-private partnerships**.

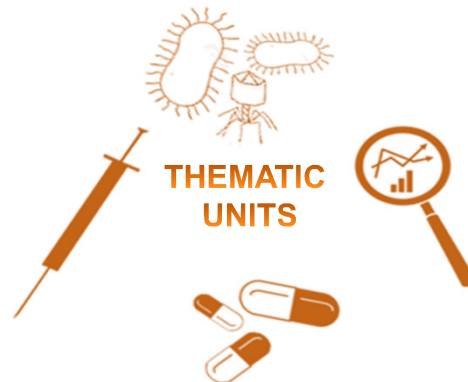
TECHNOLOGY UNITS

Preclinical Models & Imaging
Translational models

Immunomonitoring
Assay development and biomarker discovery

Expression Systems & Protein Engineering
Novel tools for biotherapeutics and diagnostics

Biological Samples Collections
Bridging the gap between R&D and clinic



Genomics & Transcriptomics
HT technologies, HQ data analysis

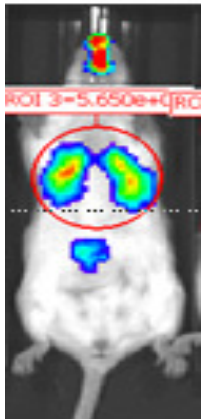
Metabolomics & Proteomics
Cross-combine approaches and technologies

Data Management & Analysis
Analyze, secure and share data

2. Pre-clinical animal models:

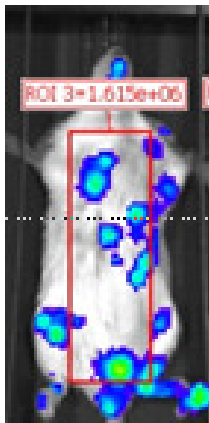
Pre-clinical animal models

IN



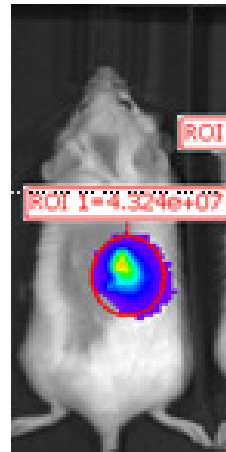
P. aeruginosa
K. pneumoniae

IV



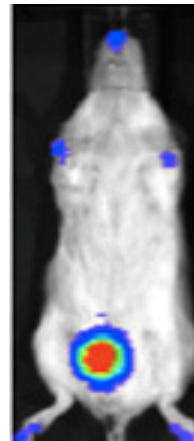
E. coli
S. aureus

SC



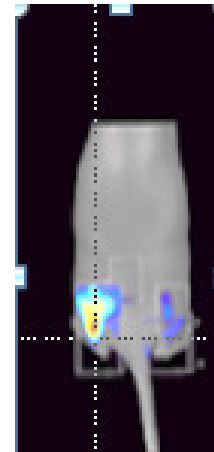
S. Aureus

Bladder



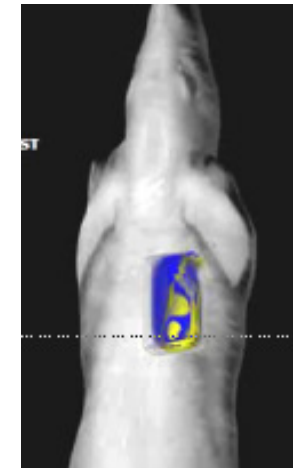
E. Coli
S. aureus

Thigh



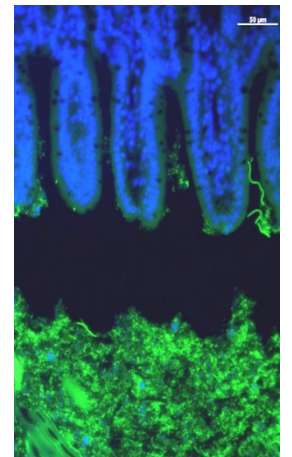
E. Coli
S. aureus

Multimodal
imaging



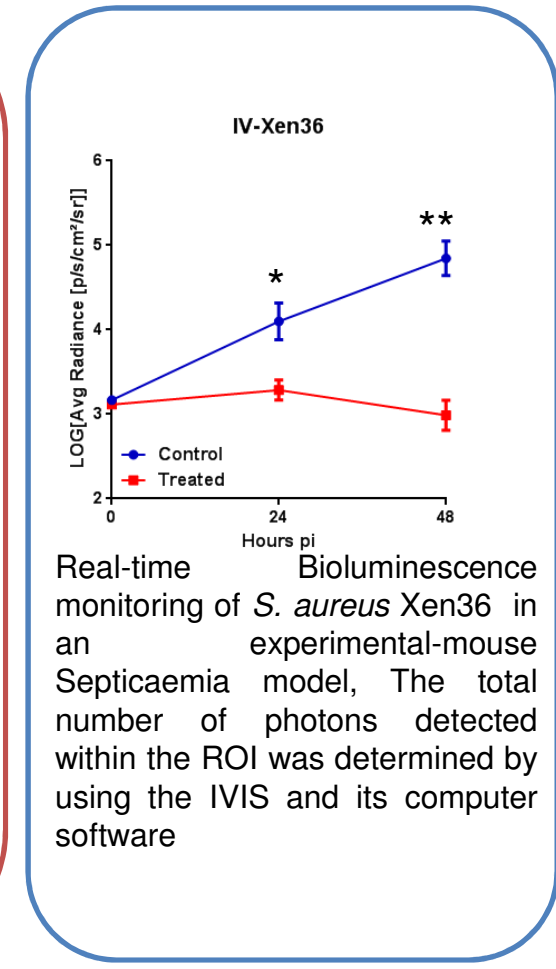
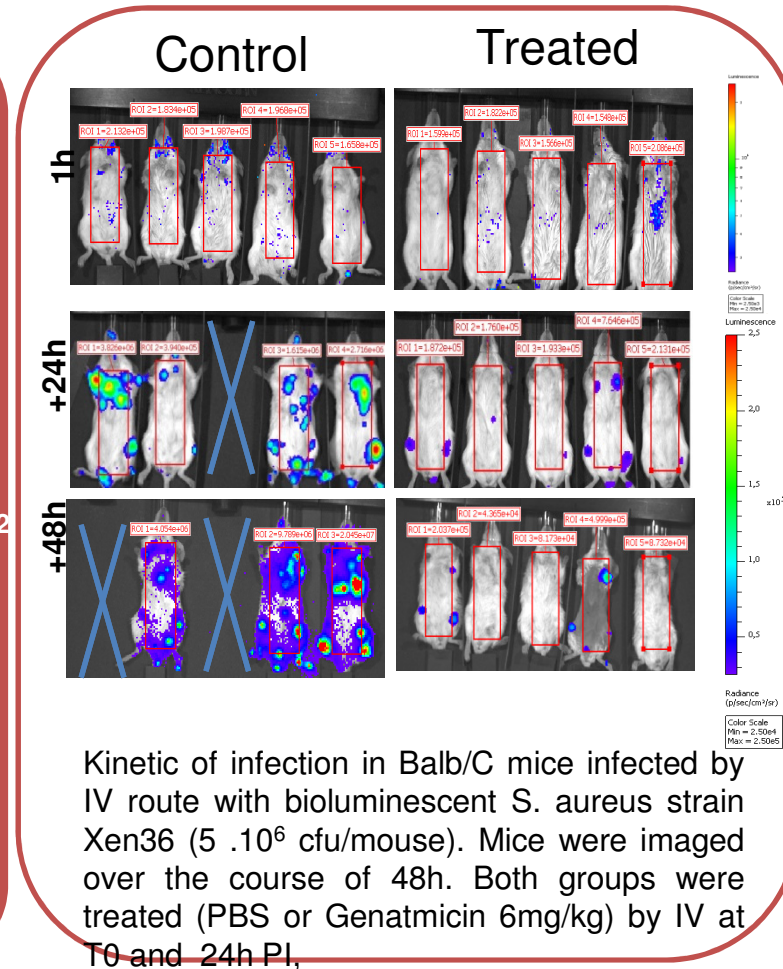
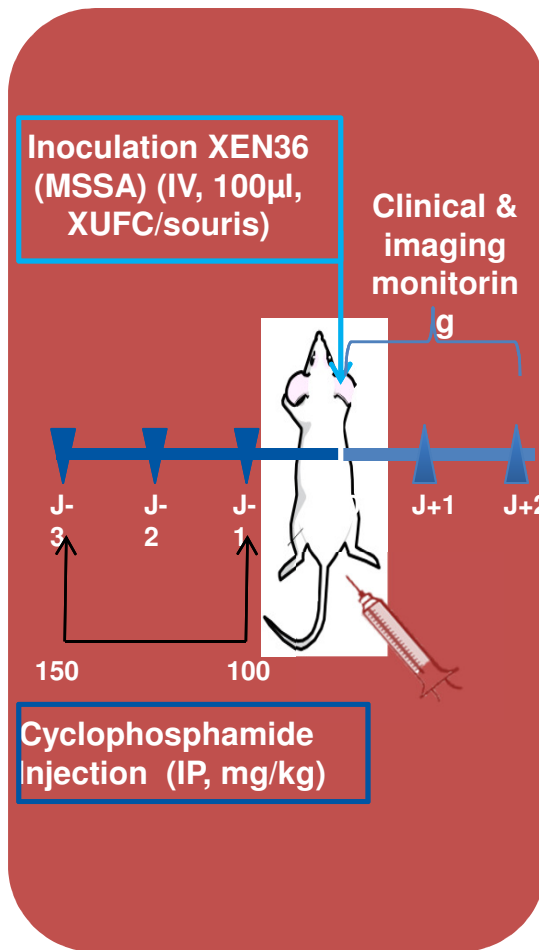
Simultaneous
BLI + Fluorescence

Immuno-
Histology



Ongoing
FISH test...

Septicaemia model (*S aureus*)



▶ 3. CONTACT :



New building BIOASTER 1 Lyon:

2 200 m² labs including P1, P2 and P3 labs and access to the Jean Mérieux laboratory P4. 1 600 m² offices

www.bioaster.org

Abdessalem REKIKI,
arekiki@bioaste.org

Marion DARNAUD,
mdarnaud@bioaster.org -

Andrea TAMELLINI,
atamellini@bioaster.org



28 rue du Dr Roux, Paris
600 m² laboratories including P1 & P2
labs (250m²)